



**LOEVENICH**

SPRING / SUMMER 2026



<b>EVERYDAY ESSENTIALS .....</b>	<b>4</b>
LIGHT COTTON.....	4
RAIN HAPPENS .....	10
SUN GUARD .....	12
<b>FASHION HATS .....</b>	<b>14</b>
FOLDABLE & PACKABLE .....	14
LIGHT COTTON.....	18
SUN GUARD .....	22
SUN GUARD - ELEGANT .....	28
<b>HOT SUMMER VIBES .....</b>	<b>30</b>
PURE NATURE .....	30
<b>NATURAL STRAW.....</b>	<b>44</b>
WHEAT .....	44
RAFFIA .....	46
<b>ABOUT LOEVENICH.....</b>	<b>52</b>
<b>SALES INFORMATION .....</b>	<b>54</b>

673.001-709 (sage green)



**article number:** 676.000  
**size:** one size  
**price group:** 118 (retail price: 35,95 €)  
**description:** knitted cotton beanie with rolled edge  
**quality:** 100% cotton  
**specials:** crushable; skin-friendly; can be worn all year round



**article number:** 673.001  
**size:** one size  
**price group:** 116 (retail price: 29,95 €)  
**description:** knitted cotton basque with rolled edge  
**quality:** 100% cotton  
**specials:** crushable; skin-friendly; can be worn all year round



**article number:** 673.004  
**size:** one size  
**price group:** 120 (retail price: 39,95 €)  
**description:** knitted cotton crochet beret with special ajour pattern  
**quality:** 100% cotton  
**specials:** crushable; skin-friendly; can be worn all year round



**article number:** 679.000  
**size:** one size  
**price group:** 116 (retail price: 29,95 €)  
**description:** cotton binder cap  
**quality:** 100% cotton  
**specials:** made of ultra-light, breathable cotton fabric; completely ready-made; with hidden elastic band at the back, so that you only have to tie the ends to adjust the cap to your head size; nothing can slip out of place; the peak offers additional sun protection; crushable



**article number:** 679.001  
**size:** one size  
**price group:** 118 (retail price: 35,95 €)  
**description:** cotton cap  
**quality:** 100% cotton  
**specials:** made from ultra-light, breathable cotton fabric; with a sewn-in elasticated waistband at the back so it fits the head perfectly and stays in place even in strong winds; the peak offers additional sun protection; crushable



**article number:** 671.002  
**size:** one size  
**price group:** 118 (retail price: 35,95 €)  
**description:** cotton hat  
**quality:** 100% cotton, lining: 100% cotton  
**specials:** made from ultra-light, breathable cotton fabric; with elasticated metal size adjuster at the back to quickly and perfectly adjust the head size and keep it in place even in strong winds; crushable



671.002-709 (sage green)



**article number:** 679.002  
**size:** one size  
**price group:** 116 (retail price: 29,95 €)  
**description:** cotton baseball cap  
**quality:** 100% cotton  
**specials:** made from ultra-light, breathable cotton fabric; with elasticated metal size adjuster at the back to quickly and perfectly adjust the head width and keep it in place even in strong winds; nice and soft and does not pinch the forehead; crushable



**article number:** 679.003  
**size:** one size  
**price group:** 118 (retail price: 35,95 €)  
**description:** Cotton cap with sun visor  
**quality:** 100% cotton  
**specials:** made from ultra-light, breathable cotton fabric; with elasticated metal size adjuster at the back so that the head width can be adjusted quickly and perfectly and stays in place even in strong winds; nice and soft and comfortable fit; the wider peak offers additional sun protection; crushable



**article number:** 679.021  
**size:** one size  
**price group:** 116 (retail price: 29,95 €)  
**description:** cotton visor  
**quality:** 100% cotton  
**specials:** made from ultra-light, breathable cotton fabric; with elasticated metal size adjuster at the back so that the head width can be adjusted quickly and perfectly and stays in place even in strong winds; backside lining out of soft terry cloth



**article number:** 679.006  
**size:** one size  
**price group:** 118 (retail price: 35,95 €)  
**description:** rain cap made from wind and water-repellent functional fabric  
**quality:** 100% polyester, lining: 100% polyester  
**specials:** the visor offers additional rain protection, especially for spectacle wearers; crushable; with sewn-in elasticated waistband at the back so it adapts perfectly to the head size and stays in place even in strong winds; can be worn all year round



174 (sand)      360 (red)      570 (dark navy)      990 (black)



**article number:** 671.000  
**size:** one size  
**price group:** 118 (retail price: 35,95 €)  
**description:** rain hat made from wind and water-repellent functional fabric  
**quality:** 100% polyester, lining: 100% polyester  
**specials:** crushable; with elasticated metal size adjuster at the back for quick and perfect adjustment of the head size and stays on even in strong winds; can be worn all year round



174 (sand)      360 (red)      570 (dark navy)      990 (black)

**article number:** 671.001  
**size:** one size  
**price group:** 120 (retail price: 39,95 €)  
**description:** fishermen hat made of wind and water-repellent functional fabric with storm band  
**quality:** 100% polyester, lining: 100% polyester  
**specials:** crushable; with elasticated metal size adjuster at the back so that the head size can be adjusted quickly and perfectly and stays in place even in strong winds; with an additional, detachable storm strap; can be worn all year round



174 (sand)      990 (black)



671.000-174 (sand)

**article number:** 679.007  
**size:** one size  
**price group:** 118 (retail price: 35,95 €)  
**description:** cap with wide sun visor  
**quality:** 100% polyester  
**specials:** ribbed braids sewn; withstands even light drizzle; also suitable as a convertible cap; with Velcro adjuster at the back for perfect head size adjustment; crushable



018 (white topaz)



029 (antique white)



521 (ibiza blue)



993 (velvet black)



672.000-018 (white topaz)

**article number:** 672.000  
**size:** one size  
**price group:** 118 (retail price: 35,95 €)  
**description:** cloche with elastic sweatband  
**quality:** 100% polyester  
**specials:** ribbed braids sewn; withstands even light drizzle; the soft, elastic sweatband adapts perfectly to the head size; crushable



018 (white topaz)



029 (antique white)



521 (ibiza blue)



993 (velvet black)



679.007-521 (ibiza blue)

**article number:** 672.005  
**size:** one size  
**price group:** 120 (retail price: 39,95 €)  
**description:** crushable ribbon cloche  
**quality:** 90% polyester, 10% paper  
**specials:** medium size cloche out of ribbon braid with paper crochet around the brim; offers although sun protection; crushable



030 (cream)



332 (water melon)



491 (violet)



580 (denim)



723 (bamboo)



**article number:** 672.006  
**size:** one size  
**price group:** 124 (retail price: 49,95 €)  
**description:** big crushable ribbon cloche  
**quality:** 90% polyester, 10% paper  
**specials:** ribbon braided cloche with wide brim and paper crochet tassel trimming and around the brim; offers although sun protection; with elastic sweatband to fit all sizes; crushable



030 (cream)



332 (water melon)



491 (violet)



580 (denim)



723 (bamboo)



672.006-030 (cream)



672.007-332 (water melon)

**article number:** 672.007  
**size:** one size  
**price group:** 118 (retail price: 35,95 €)  
**description:** foldable/ rollable ribbon visor  
**quality:** 100% polyester  
**specials:** visor out of ribbon braid; offers although sun protection; with velcro to adjust all sizes; crushable and foldable



030 (cream)



332 (water melon)



491 (violet)



580 (denim)



723 (bamboo)



**article number:** 671.015  
**size:** one size  
**price group:** 120 (retail price: 39,95 €)  
**description:** 2 colorway denim hat  
**quality:** 100% cotton  
**specials:** with logo embroidery; with elasticated metal size adjuster at the back to quickly and perfectly adjust the head size



580 (denim)



**article number:** 679.024  
**size:** one size  
**price group:** 118 (retail price: 35,95 €)  
**description:** 2 colorway denim baseball cap  
**quality:** 100% cotton  
**specials:** with logo embroidery; with elasticated metal size adjuster at the back to quickly and perfectly adjust the head size



580 (denim)



679.024-580 (denim)

**article number:** 679.022  
**size:** one size  
**price group:** 120 (retail price: 39,95 €)  
**description:** printed cotton binder cap  
**quality:** 100% cotton  
**specials:** made of ultra-light, breathable multi print cotton fabric; completely ready-made; with hidden elastic band at the back, so that you only have to tie the ends to adjust the cap to your head size; nothing can slip out of place; the peak offers additional sun protection; crushable



970 (multi color peach)



971 (multi color sun)



**article number:** 671.013  
**size:** one size  
**price group:** 120 (retail price: 39,95 €)  
**description:** printed cotton hat  
**quality:** 100% cotton, lining: 100% cotton  
**specials:** made of ultra-light, breathable multi print cotton fabric; with elasticated metal size adjuster at the back to quickly and perfectly adjust the head size and keep it in place even in strong winds; crushable



970 (multi color peach)



971 (multi color sun)



**article number:** 679.023  
**size:** one size  
**price group:** 120 (retail price: 39,95 €)  
**description:** printed cotton visor  
**quality:** 100% cotton  
**specials:** made from ultra-light, breathable multi print cotton fabric; with elasticated metal size adjuster at the back so that the head width can be adjusted quickly and perfectly and stays in place even in strong winds; backside lining out of soft terry cloth



970 (multi color peach)



971 (multi color sun)



**article number:** 671.014  
**size:** one size  
**price group:** 118 (retail price: 35,95 €)  
**description:** printed cotton pirat cap  
**quality:** 100% cotton  
**specials:** made of ultra-light, breathable multi print cotton fabric; completely ready-made; with hidden elastic band at the back, so that you only have to tie the ends to adjust the pirat cap to your head size; nothing can slip out of place; crushable



970 (multi color peach)



971 (multi color sun)



671.014-970  
(multi color peach)

**article number:** 679.508  
**size:** one size  
**price group:** 126 (retail price: 59,95 €)  
**description:** cap with ultra wide peak  
**quality:** 45% cotton, 45% paper, 10% polyester  
**specials:** made of ultra-light, breathable paper braid and printed cotton fabric; with cotton band ends to be knotted at the back to adjust the headsize



030 (cream)

178 (light sand)



**article number:** 679.505  
**size:** one size  
**price group:** 124 (retail price: 49,95 €)  
**description:** pleated cloche  
**quality:** 75% paper, 25% polyester  
**specials:** made of ultra-light, breathable paper braid; short at the back; the elastic sweatband adapts perfectly to the head size



030 (cream)

178 (light sand)



**article number:** 679.504  
**size:** one size  
**price group:** 120 (retail price: 39,95 €)  
**description:** braided baseball cap  
**quality:** 75% paper, 25% polyester  
**specials:** made of ultra-light, breathable paper braid; with elasticated metal size adjuster at the back so that the head width can be adjusted quickly and perfectly; stays in place even in strong winds



030 (cream)

178 (light sand)

**article number:** 674.016  
**size:** one size  
**price group:** 124 (retail price: 49,95 €)  
**description:** hat with rolled up brim  
**quality:** 75% paper, 25% polyester  
**specials:** made of ultra-light, breathable paper braid; the elastic sweatband adapts perfectly to the head size



030 (cream)

178 (light sand)



674.018-030 (cream)

**article number:** 674.017  
**size:** one size  
**price group:** 126 (retail price: 59,95 €)  
**description:** feminine matelot shape with ribbon band  
**quality:** 75% paper, 25% polyester  
**specials:** made of ultra-light, breathable paper braid; with contrast ribbon trimming; the elastic sweatband adapts perfectly to the head size



030 (cream)

178 (light sand)



**article number:** 674.018  
**size:** one size  
**price group:** 124 (retail price: 49,95 €)  
**description:** fancy fedora shape with ribbon band  
**quality:** 75% paper, 25% polyester  
**specials:** made of ultra-light, breathable paper braid; with contrast ribbon trimming; short at the back for the perfect fit; with Velcro adjuster at the back for perfect head size adjustment



030 (cream)

178 (light sand)

**article number:** 679.506  
**size:** one size  
**price group:** 120 (retail price: 39,95 €)  
**description:** baseball shape with wider peak  
**quality:** 75% paper, 25% polyester  
**specials:** made of ultra-light, breathable paper braid; with contrast ribbon trimming; short at the back for the perfect fit; with Velcro adjuster at the back for perfect head size adjustment



030 (cream)



178 (light sand)



**article number:** 674.019  
**size:** one size  
**price group:** 132 (retail price: 89,95 €)  
**description:** big cloche with adjustable band  
**quality:** 88% paper, 12% polyester  
**specials:** made of special melange paper braid; with metall eyelets and leopard trimming; the trimming can be easy changed; the elastic sweatband adapts perfectly to the head size



178 (light sand)



**article number:** 679.507  
**size:** one size  
**price group:** 118 (retail price: 35,95 €)  
**description:** sportive visor  
**quality:** 75% paper, 25% polyester  
**specials:** made of ultra-light, breathable paper braid; with contrast ribbon trimming; with elastic at the back



030 (cream)



178 (light sand)



674.019-178 (light sand)

**article number:** 672.009  
**size:** one size  
**price group:** 124 (retail price: 49,95 €)  
**description:** multi melange fedora style  
**quality:** 65% polyester, 20% paper, 15% viscose  
**specials:** can be worn elegantly for a special event or as sun protection on the beach; the wide brim offers plenty of sun protection; sewn from crushable functional braid; withstands even light drizzle; the elastic sweatband adjusts perfectly to the head size



580 (denim)



**article number:** 672.010  
**size:** one size  
**price group:** 120 (retail price: 39,95 €)  
**description:** multi melange cloche style  
**quality:** 65% polyester, 20% paper, 15% viscose  
**specials:** can be worn elegantly for a special event or as sun protection on the beach; the wide brim offers plenty of sun protection; sewn from crushable functional braid; withstands even light drizzle; the elastic sweatband adjusts perfectly to the head size



174 (sand)

**article number:** 672.002  
**size:** one size  
**price group:** 124 (retail price: 49,95 €)  
**description:** large turn-up hat  
**quality:** 100% polyester  
**specials:** can be worn elegantly for a special event or as sun protection on the beach; the wide brim offers plenty of sun protection; sewn from crushable functional braid; withstands even light drizzle; trimmed with sewn-on grosgrain ribbon with pearl ends; the elastic sweatband adjusts perfectly to the head size



010 (white)

174 (sand)

201 (soft nude)

990 (black)



**article number:** 672.008  
**size:** one size  
**price group:** 120 (retail price: 39,95 €)  
**description:** elegant cloche  
**quality:** 100% polyester  
**specials:** can be worn elegantly for a special event or as sun protection on the beach; with melange colour around the brim; sewn from crushable functional braid; withstands even light drizzle



010 (white)

174 (sand)

201 (soft nude)

990 (black)

**article number:** 679.502  
**size:** one size  
**price group:** 116 (retail price: 29,95 €)  
**description:** paper crochet baseball cap  
**quality:** 100% paper  
**specials:** the peak offers additional sun protection; light and breathable; the elastic sweatband adapts perfectly to the head size; crushable



010 (white)



177 (white pepper)



860 (taupe)



520 (blue)



990 (black)

**article number:** 674.509  
**size:** one size  
**price group:** 118 (retail price: 35,95 €)  
**description:** small paper crochet hat  
**quality:** 100% paper  
**specials:** light and breathable; the elastic sweatband adapts perfectly to the head size; crushable



177 (white pepper)



860 (taupe)



520 (blue)



990 (black)



**article number:** 674.510  
**size:** one size  
**price group:** 120 (retail price: 39,95 €)  
**description:** paper crochet fedora  
**quality:** 100% paper  
**specials:** light and breathable; the elastic sweatband adapts perfectly to the head size; crushable



177 (white pepper)



990 (black)



679.502-177 (white pepper)



674.511-030 (cream)

**article number:** 674.501  
**size:** one size  
**price group:** 120 (retail price: 39,95 €)  
**description:** paper crochet cloche with trimming  
**quality:** 100% paper  
**specials:** lightweight and breathable; the elastic sweatband adapts perfectly to the head size; with colour-coordinated trim; crushable



030 (cream)

201 (soft nude)

709 (sage green)



**article number:** 674.511  
**size:** one size  
**price group:** 118 (retail price: 35,95 €)  
**description:** paper crochet beret  
**quality:** 100% paper  
**specials:** light and breathable; the elastic sweatband adapts perfectly to the head size; with the beret iconic antenna on the top of the crown; crushable



030 (cream)

201 (soft nude)

709 (sage green)

**article number:** 674.502  
**size:** one size  
**price group:** 120 (retail price: 39,95 €)  
**description:** convertible cloche hat  
**quality:** 95% paper, 5% polyester  
**specials:** lightweight and breathable; can be adjusted quickly and perfectly and stays in place even in strong winds; the colour-contrasting brim can be flexibly shaped and worn; crushable



018 (white topaz)    029 (antique white)    521 (ibiza blue)    993 (velvet black)



**article number:** 674.512  
**size:** one size  
**price group:** 124 (retail price: 49,95 €)  
**description:** paper crochet fedora with boho band  
**quality:** 100% paper  
**specials:** 2 col'way; light and breathable; the elastic sweatband adapts perfectly to the head size; crushable



177 (white pepper)



674.512-177 (white pepper)

**article number:** 674.513  
**size:** one size  
**price group:** 124 (retail price: 49,95 €)  
**description:** paper crochet fedora with trimming  
**quality:** 100% paper  
**specials:** with special crochet pattern and smile trimming; light and breathable; the elastic sweatband adapts perfectly to the head size; crushable



180 (camel)



674.014-180 (camel)



674.513-180 (camel)

**article number:** 674.014  
**size:** one size  
**price group:** 126 (retail price: 59,95 €)  
**description:** paper cowboy hat  
**quality:** 100% paper  
**specials:** rough cowboyhat with special multi beads trimming and stitched brim edge; light and breathable; the elastic sweatband adapts perfectly to the head size; crushable



177 (white pepper)



180 (camel)

**article number:** 674.504  
**size:** one size  
**price group:** 120 (retail price: 39,95 €)  
**description:** small paper crochet fedora  
**quality:** 100% paper  
**specials:** with special crochet pattern; lightweight and breathable; the elastic sweatband adapts perfectly to the head size; crushable



177 (white pepper)



180 (camel)



**article number:** 674.514  
**size:** one size  
**price group:** 124 (retail price: 49,95 €)  
**description:** cloche with special paper crochet pattern  
**quality:** 100% paper  
**specials:** with frayed edge; lightweight and breathable; the elastic sweatband adapts perfectly to the head size; crushable



177 (white pepper)



760 (olive)



674.504-180 (camel)

**article number:** 674.515  
**size:** one size  
**price group:** 124 (retail price: 49,95 €)  
**description:** 3 col'way crochet cloche  
**quality:** 100% paper  
**specials:** with special paper crochet pattern; lightweight and breathable; the elastic sweatband adapts perfectly to the head size; crushable



177 (white pepper)



**article number:** 674.009  
**size:** one size  
**price group:** 120 (retail price: 39,95 €)  
**description:** ultra light fedora  
**quality:** 100% paper  
**specials:** woven by hand with a boho pattern; light and breathable; the elastic sweatband adjusts perfectly to the head size



177 (white pepper)

**article number:** 674.008  
**size:** one size  
**price group:** 120 (retail price: 39,95 €)  
**description:** 2 colourway trilby style  
**quality:** 100% paper  
**specials:** 2-coloured ultra light trilby (UNISEX); braided with contrasting colour pattern; light and breathable; the elastic sweatband adjusts perfectly to the head size



178 (light sand)



189 (camel clay)



760 (olive)



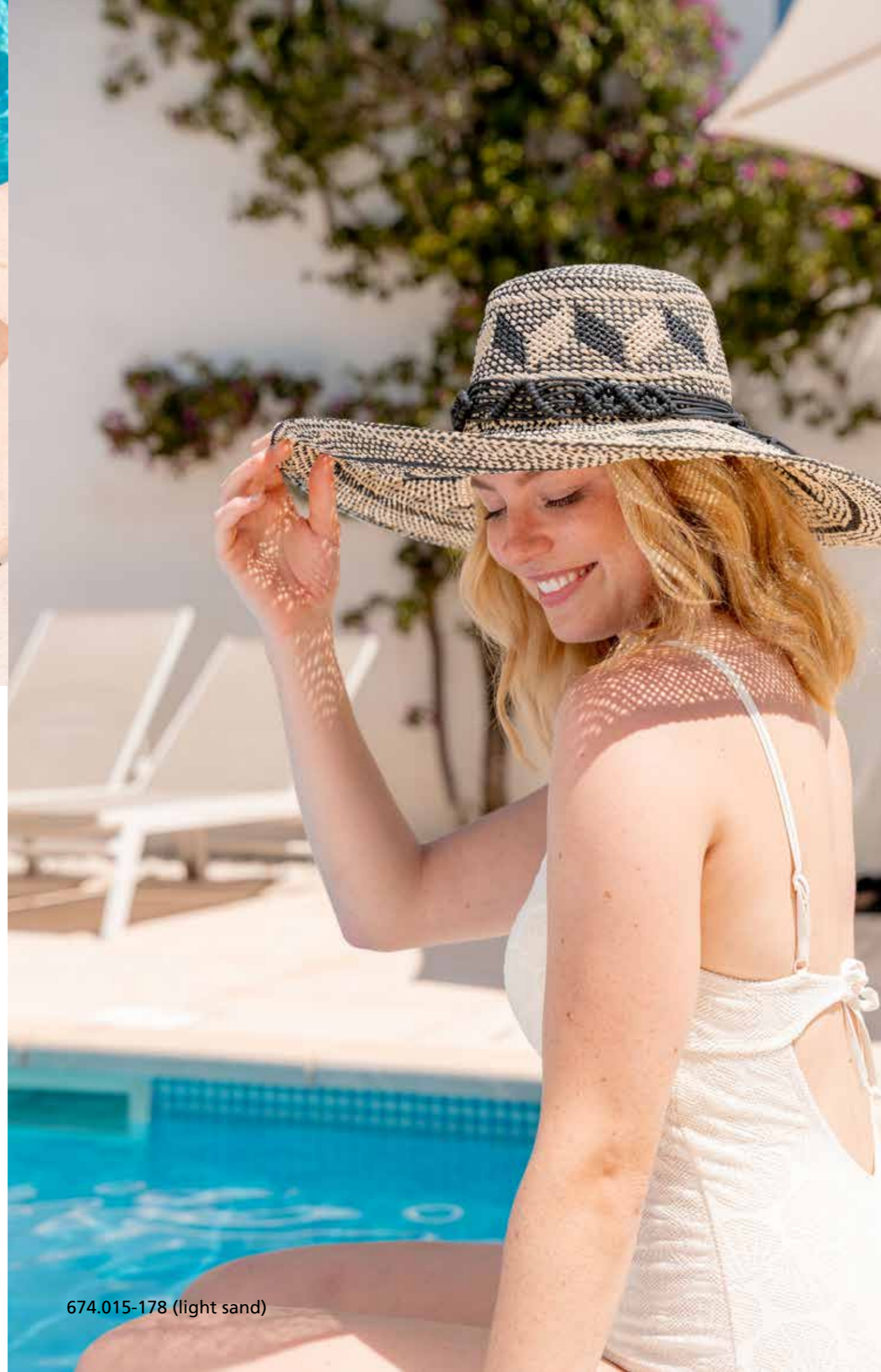
674.008-189 (camel clay)



**article number:** 674.015  
**size:** one size  
**price group:** 126 (retail price: 59,95 €)  
**description:** 2 colourway cloche style  
**quality:** 100% paper  
**specials:** 2-coloured ultra light cloche with trimming; braided with contrasting colour pattern; light and breathable; the elastic sweatband adjusts perfectly to the head size



178 (light sand)



674.015-178 (light sand)

**article number:** 679.503  
**size:** one size  
**price group:** 116 (retail price: 29,95 €)  
**description:** visor made from wheat straw  
**quality:** 100% straw  
**specials:** with colourful, cheerful grosgrain ribbon inside  
 with elasticated metal size adjuster at the back, allowing the head width to be adjusted quickly and perfectly and stays in place even in strong winds



177 (white pepper)

990 (black)



**article number:** 677.003  
**size:** one size  
**price group:** 124 (retail price: 49,95 €)  
**description:** classic Venetian boater made from wheat straw  
**quality:** 100% straw  
**specials:** trimmed with grosgrain ribbon  
 the soft, elastic sweatband adapts perfectly to the head size



177 (white pepper)

178 (light sand)

**article number:** 677.019  
**size:** one size  
**price group:** 132 (retail price: 89,95 €)  
**description:** wheat straw cloche with special trimming  
**quality:** 100% straw  
**specials:** big wheat straw cloche with metall eyelets and band trimming; with hand crochet cherry trimming; the soft, elastic sweatband adapts perfectly to the head size



177 (white pepper)

178 (light sand)



677.019-177 (white pepper)

**article number:** 677.006  
**size:** one size  
**price group:** 126 (retail price: 59,95 €)  
**description:** feminine cloche made from raffia straw braid  
**quality:** 100% straw  
**specials:** trimmed with grosgrain ribbon;  
 the soft, elastic sweatband adapts perfectly to the head size



030 (cream)



178 (light sand)



677.006-178 (light sand)



677.009-177 (white pepper)

**article number:** 677.009  
**size:** one size  
**price group:** 128 (retail price: 69,95 €)  
**description:** feminine raffia cloche  
**quality:** 100% straw  
**specials:** decorated at the back with a shortened edge and large grosgrain bow  
 the soft, elastic sweatband adapts perfectly to the head size



030 (cream)



177 (white pepper)

**article number:** 677.011  
**size:** one size  
**price group:** 126 (retail price: 59,95 €)  
**description:** fashionable raffia cloche with crocheted head and raffia brim  
**quality:** 100% straw  
**specials:** with denim trim; light and breathable; crushable; the soft, elastic sweatband adapts perfectly to the head size



175 (desert dust)



677.012-177 (white pepper)



677.012-177 (white pepper)

**article number:** 677.012  
**size:** one size  
**price group:** 128 (retail price: 69,95 €)  
**description:** Cowboy hat made from Raffia straw  
**quality:** 100% straw  
**specials:** the brim is flexible and mouldable; trimmed with a vegan faux leather band and can be worn around the neck; light and breathable; crushable; the soft, elastic sweatband adapts perfectly to the head size



177 (white pepper)

**article number:** 677.017  
**size:** one size  
**price group:** 132 (retail price: 89,95 €)  
**description:** raffia cloche with special crochet pattern  
**quality:** 100% straw  
**specials:** with special embroidery; light and breathable; crushable;  
the soft, elastic sweatband adapts perfectly to the head size



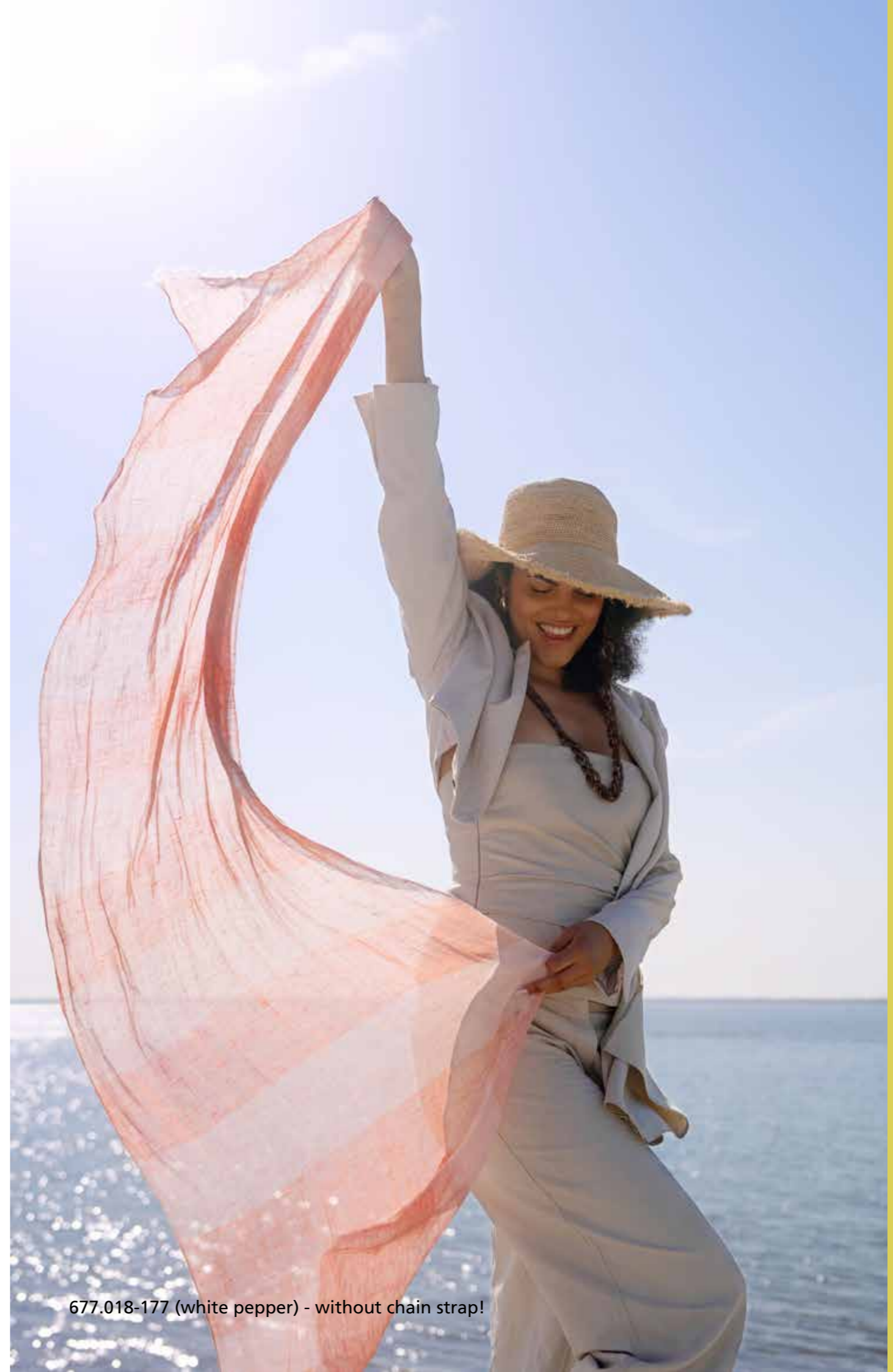
177 (white pepper)



**article number:** 677.018  
**size:** one size  
**price group:** 140 (retail price: 129,00 €)  
**description:** large cloche made from super fine crochet raffia straw  
**quality:** 100% straw  
**specials:** with frayed straw edge; light and breathable; crushable;  
the soft, elastic sweatband adapts perfectly to the head size



177 (white pepper)



677.018-177 (white pepper) - without chain strap!

## SCHALS SIND UNSERE WELT. UND JETZT AUCH HÜTE.

Seit Juni 2024 sind wir nämlich stolze Eigentümer der Marke LOEVENICH. Was das für Sie bedeutet: Wir erweitern unser Damen-Portfolio um Sonnenhüte, Strohhüte, Visoren, Eventhüte, Basecaps, Regenhüte und Taschen. Zukünftig erhalten Sie also noch mehr Accessoires bei V. FRAAS International Trading: Wir setzen auf den perfekten Mix aus bewährten Qualitätsstandards, Trends, Nachhaltigkeitsdenken und frischen Ideen. Ob es schneit, regnet oder die Sonne scheint - wir bieten für jedes Wetter das perfekte Accessoire. Überall auf der Welt.

## SCARVES ARE OUR WORLD. AND SO ARE HATS.

Since June 2024, we have been the proud owners of the LOEVENICH brand. What this means for you: We are expanding our women's portfolio to include sun hats, straw hats, visors, event hats, baseball caps, rain hats and bags. In future, you will therefore be able to obtain even more accessories from V. FRAAS International Trading: we rely on the perfect mix of proven quality standards, trends, sustainability thinking and fresh ideas. Whether it's snowing, raining or the sun is shining - we offer the perfect accessory for any weather. All over the world.



## TRENDS AUS ALLER WELT.

Laufstege in Paris, Kopenhagen, London, Tokio und New York inspirieren unsere Kollektionen. Im hauseigenen LOEVENICH-Atelier laufen dann alle Fäden der internationalen Huttrends zusammen. Das Ergebnis: Hüte und Caps mit viel Liebe zum Detail.

## TRENDS FROM ALL OVER THE WORLD

Catwalks in Paris, Copenhagen, London, Tokyo and New York inspire our collections. All the threads of international hat trends then come together in our LOEVENICH in-house atelier. The result: hats and caps with great attention to detail.

DISPOSITION CYCLES SUMMER 2026

Range	Order Entry	Ext. Delivery Date
1. Dispo Summer 2026	04. Sep 25	week 8-12/2026

NOS STYLES SUMMER 2026

= NOS

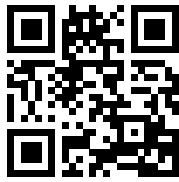
671.002	030 cream	cotton hat	100% cotton
	177 white pepper	cotton hat	100% cotton
	580 denim	cotton hat	100% cotton
	990 black	cotton hat	100% cotton
679.000	030 cream	cotton binder cap	100% cotton
	177 white pepper	cotton binder cap	100% cotton
	580 denim	cotton binder cap	100% cotton
	990 black	cotton binder cap	100% cotton
679.001	030 cream	cotton cap	100% cotton
	177 white pepper	cotton cap	100% cotton
	580 denim	cotton cap	100% cotton
	990 black	cotton cap	100% cotton
679.002	030 cream	cotton baseball cap	100% cotton
	177 white pepper	cotton baseball cap	100% cotton
	580 denim	cotton baseball cap	100% cotton
	990 black	cotton baseball cap	100% cotton
679.003	030 cream	cotton cap with sun visor	100% cotton
	177 white pepper	cotton cap with sun visor	100% cotton
	580 denim	cotton cap with sun visor	100% cotton
	990 black	cotton cap with sun visor	100% cotton
673.001	030 cream	knitted cotton basque with rolled edge	100% cotton
	174 sand	knitted cotton basque with rolled edge	100% cotton
	570 dark navy	knitted cotton basque with rolled edge	100% cotton
	580 denim	knitted cotton basque with rolled edge	100% cotton
	860 taupe	knitted cotton basque with rolled edge	100% cotton
	910 silver	knitted cotton basque with rolled edge	100% cotton
	990 black	knitted cotton basque with rolled edge	100% cotton
676.000	030 cream	knitted cotton beanie with rolled edge	100% cotton
	174 sand	knitted cotton beanie with rolled edge	100% cotton
	570 dark navy	knitted cotton beanie with rolled edge	100% cotton
	580 denim	knitted cotton beanie with rolled edge	100% cotton
	860 taupe	knitted cotton beanie with rolled edge	100% cotton
	910 silver	knitted cotton beanie with rolled edge	100% cotton
	990 black	knitted cotton beanie with rolled edge	100% cotton
674.502	018 white topaz	convertible cloche hat	95% paper, 5% polyester
	029 antique white	convertible cloche hat	95% paper, 5% polyester
	521 ibiza blue	convertible cloche hat	95% paper, 5% polyester
	993 velvet black	convertible cloche hat	95% paper, 5% polyester
679.502	010 white	paper crochet baseball cap	100% paper
	177 white pepper	paper crochet baseball cap	100% paper
	520 blue	paper crochet baseball cap	100% paper
	860 taupe	paper crochet baseball cap	100% paper
	990 black	paper crochet baseball cap	100% paper
677.009	177 white pepper	feminine raffia cloche	100% straw

THANK YOU FOR YOUR INTEREST IN OUR PRODUCTS.

If you have any questions, please feel free to email us at [info@fraas.com](mailto:info@fraas.com).  
You are welcome to place orders by e-mail at [info@fraas.com](mailto:info@fraas.com)  
or by telephone at +49 (0) 9252 703 0.

WE LOOK FORWARD TO HEARING FROM YOU.

V. FRAAS International Trading GmbH  
Orter Straße 6  
95233 Helmbrechts



[B2B.FRAAS.COM](https://B2B.FRAAS.COM)